

## venue specification - kiosk



Our Kiosk venue is a unique creative space ideal for smaller displays or maker sales. Part of Gayfield Creative Spaces, located in central Edinburgh, it is close to the tram, rail and bus termini. The Kiosk has a separate street level entrance and accessible toilet facilities. It can be hired individually or in combination with our other creative spaces.

### Specification

Floor space: 34m<sup>2</sup>

Dimensions: width - 6m wide  
depth – 5.7m

height – 2.5m rising (at 2m in) to include pitch roof of 3.7m

Capacity: 25 theatre style, 40 reception

Facilities: high speed Wi-Fi internet connection  
access to basement kitchen area

2 windows and glass entrance door to the front and 2 skylights providing natural light to the rear, strip lights

gantry and roof beams for additional lighting (access ladder available)

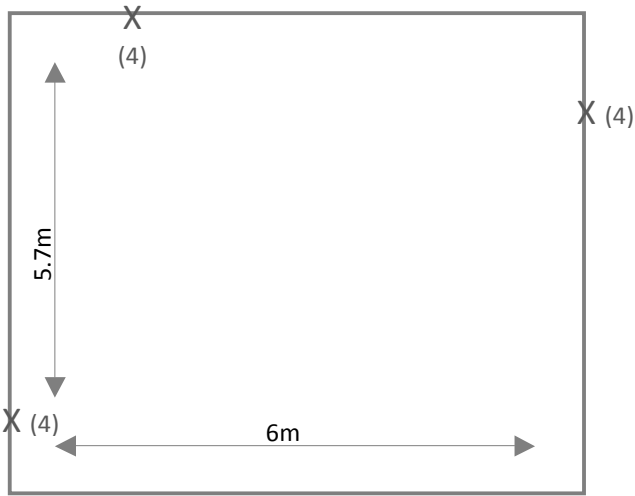
Additional information: variety of exhibition furniture and equipment available for events

access to whitespace gallery via a ramp and depot via steps

we offer additional support to help with your event

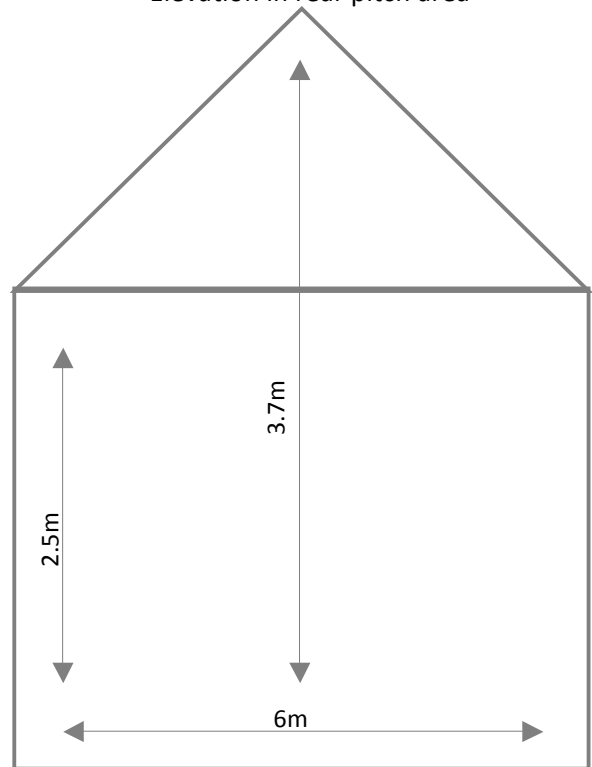
Dimensions

Floor Plan

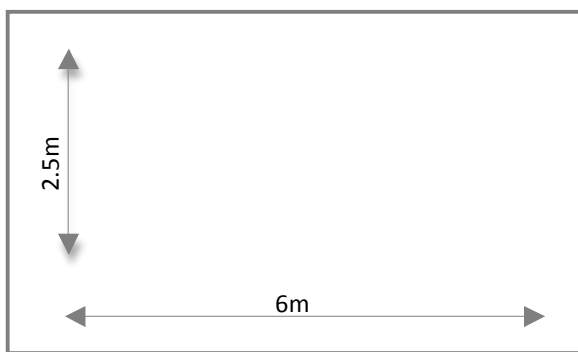


X – plugs (no. of sockets)

Elevation in rear pitch area



Front Elevation in lowered ceiling area



Please Note: All dimensions are approximate and should be confirmed in the venue prior to your event. Please have a look at our events archive for examples of this venue in use.

G2Spec (Jan2016)

gayfield creative spaces / 11 gayfield square / Edinburgh / eh1 3nt      a hub for collaboration in central Edinburgh

contact us: [info@gayfield.co.uk](mailto:info@gayfield.co.uk)

follow us on twitter: [@gayfieldsq](https://twitter.com/gayfieldsq)

like us on facebook: [@gayfieldsq](https://www.facebook.com/gayfieldsq)